

**nescot**  
made for life



**Foundation Information Evening**



# What is the aim of today?

---

- » For you to find out more about the SEN support available at Nescot.
- » For you to find out more about English and maths.
- » To ask questions about the course your young person is enrolled on.
- » To familiarise yourself with the department, other parents and carers.
- » Additional support and external providers.
- » Meet the team



Lisa



Slavina



Carol-Anne



Abby



Clarrie



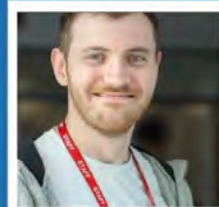
Dell



Issy



Sarah



Keelan



Jill



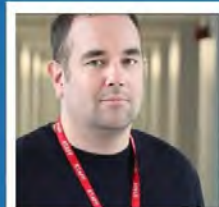
Maliha



Julie



Nicole



Richard



Margaret



Angela



Chris

Head of SEN



Caroline

LS Coordinator



Lucy

DLSA's



Adam



Shelagh



Gemma





Sam



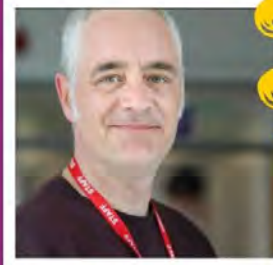
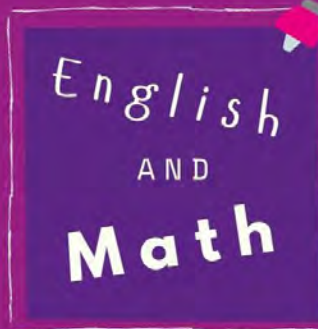
Jack



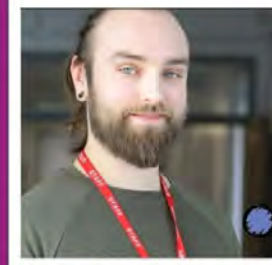
Sunita



Jo



Stephen



Keiran



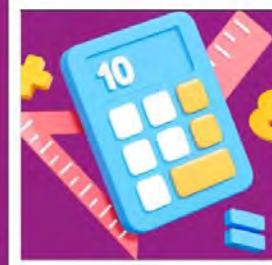
Kumi



Dee



Paul



College  
nurse



Lian



Student  
Engagement  
Officer



Holly

Student  
Mentors



Sharron



Farhana



Abbie

# nescot

## Study programme

- » Subject
- » English
- » Maths
- » Enrichment
- » Tutorial
- » Work Experience (minimum of 36 hours for all courses)

P6540	Aseantis Award and Certificate in Life Skills				Group: E2 FE B	Tutor: Keelan
	8:45 - 10:15	10:45 - 12:15	13:15 - 14:45	15:00 - 16:30		
Mon		Personal Development Keelan H SHL23	Horticulture Margaret H SHL13	Cooking Jill O'N N14		
Tue			English Keelan R SHL21	Personal Development Keelan H SHL23		
Wed	Maths Paul C SHL22	Tutorial Keelan H SHL23	Sports Julie B Sports Hall / MUGA	Art / Craft Abbie I SHL13		
Thu						
Fri		Maths Paul C SHL22	English Keelan R SHL21	Personal Development Jill O'N SHL23		

P6540	Aseantis Award in Work Preparation (Hospitality and Catering Pathway)				Group: E3 HC	Tutor: Jill
	8:45 - 10:15	10:45 - 12:15	13:15 - 14:45	15:00 - 16:30		
Mon		Digital Skills for Work Maire U C180	Visits Kumi T SHL23			
Tue	English Keelan R SHL21	Cafe Jill O'N N14 / Seasons Cafe	Cafe Jill O'N N14 / Seasons Cafe	English Keelan R SHL21		
Wed	Introduction to Catering Stuart W N14 / SHL23	Cafe Jill O'N N14 / Seasons Cafe	Cafe Jill O'N N14 / Seasons Cafe	Introduction to Hospitality Stuart W N14 / SHL24		
Thu						
Fri			Tutorial Jill O'N SHL23	Maths Kumi T SHL22		

P6540	Aseantis Award and Certificate in Skills Towards Enabling Progression (Ship Up)				Group: L1 B	Tutor: Abby
	8:45 - 10:15	10:45 - 12:15	13:15 - 14:45	15:00 - 16:30		
Mon		Maths Kumi T N18 B	Tutorial Abbie I HUB	Personal Development Abbie I HUB		
Tue		English Stuart W N18 A	Term 1 Animal Care - Kari R - Farm Term 2 Music - Elliot TBC Term 3 Media - Jess T - W459	Sports Richard E Sports Hall / MUGA		
Wed						
Thu	Maths Kumi T N18 A	Personal Development Richard E HUB	English Stuart W HUB	Sep - Feb Art - Issy D - MPA Feb-June Early Years - Jo N204		
Fri		Sep - Feb Catering - Stuart W E299/N14 Feb-June Public Services - Rosie B - TBC	Skills for Work Issy A N18 A			

# Tutorial

## Week 1:

**British Values:** understanding democracy and the rule of law, at macro and micro levels.

## Week 2:

**Safeguarding:** protocols and procedures for individuals and institutions: protection, prevention, provision.

## Week 3:

**Equality and Diversity:** understanding legislation and values in college and workplace settings.

## Week 4:

**Prevent:** the 4 p's: prevent, pursue, protect, prepare.

## Week 5:

**Student Voice:** Student Rep Elections. Student Governor nominations, Student Union sign up.

## Week 6:

**Induction Survey/** Swap Not Drop



# How we support you



# SEN and ALS support available

## Nescot

- » Learning support in lessons
- » Support with English and maths
- » Mentoring
- » Meet and greet
- » Supervised lunch area (Season Hub)
- » Sensory room

**External** (parent and carers need to contact their Local Authority to request the support)

- » SALT & OT
- » Other therapies
- » Travel training
- » Taxi /transport

# English and maths

---

Depending on the level of study programme, some students will be enrolled on either:

- » Functional skills
- » GCSE English and maths (for those with Grade 3 on entry)
- » Stretch and Challenge ( for those who are exempt from English and maths; S&C is online; it can be completed in the LRC or at home)

Information about English and Maths exams and how to access additional resources at home will be directly communicated to you and your young person by the English and Maths teachers.

## Enrichment activities

- » Charity events chosen and organised by students
- » Educational visits
- » Team-building activities
- » Social activities including sports activities, fresher's fayre, LGBTQ+ group and other activities during lunch.



**FOUNDATIONS ENRICHMENT**

Day	Activity 1	Activity 2
<b>MON</b>	• 10.00 - 10.30 - Mindful colouring - SLH13	• 12:40 - 1:10 - Football - MUGA
<b>TUE</b>	• 12:40 - 1:10 - Just Dance - SHL24 • 12:30 - 1:10 - Book Club - LRC • 12:45 - 1:10 - Chess Club - Common room	• 1.30-3.00 - Ping Pong - Common Room • 1.30-3.00 - Rugby - MUGA
<b>WED</b>	• 10.00 - 10.30 - Care Experience Drop in - Wellbeing	• 12:40 - 1:10 - Singing Club - SLH24 • 12:30 - 1:10 - Board Games - LRC • 12:30-1:10 - Girl's Football - Sports Hall
<b>THU</b>	• 10:30 - 11:00 - Young Carers Drop Ins - Wellbeing	• 12:40 - 1:10 - Film Club - SHL24 • 12:40 - 1:10 - Uno Club- HUB • 12:40 - 1:10 - Art Club - Common room
<b>FRI</b>	• 12.40-1.10 - Arts and Crafts - SLH24 • 12.30-1.00 - Escape Room - L13	• 1.30-3.00 - Mindful Colouring - Common Room

EVERY lunch time - games and social groups in the Sessions Hub, quiet room - SHL13 and Sensory room

# Preparing you for the next step

- » 1:1 with tutors (starting in December)
- » Contact home (starting in December - February)
- » SEN Careers event – Save the date 27th November 2025
- » Careers advice
- » Open events

We encourage you and your young person to attend open events and to discuss next steps.



# Work Experience

- All courses include mandatory external work-related experience to prepare the students for employment.
- Placements are related to the study programme. Where possible we work towards securing external work opportunities and placements within the community.
- During the year students will also complete internal work experience which can include supporting at events, looking after the grounds, running the Seasons' café and many more.



# The term so far

- » VI Centre of Excellence in Surrey
- » Fresher fair
- » XO girl band visiting Nescot
- » Women's Afternoon Tea
- » Macmillan charity event





nescot

ons  
ons  
e term  
ependence)

# What we expect from students

- » Attend lessons and be on time. **Attended need to be 89%**
- » Take **responsibility** for their **own learning** and commit to their studies.
- » Show respect to peers and staff and behave in line with the **code of conduct** this includes but is not limited to wearing lanyards, using appropriate language, using designated smoking and vaping areas.
- » Make a **positive contribution** to the college community.





**nescot**

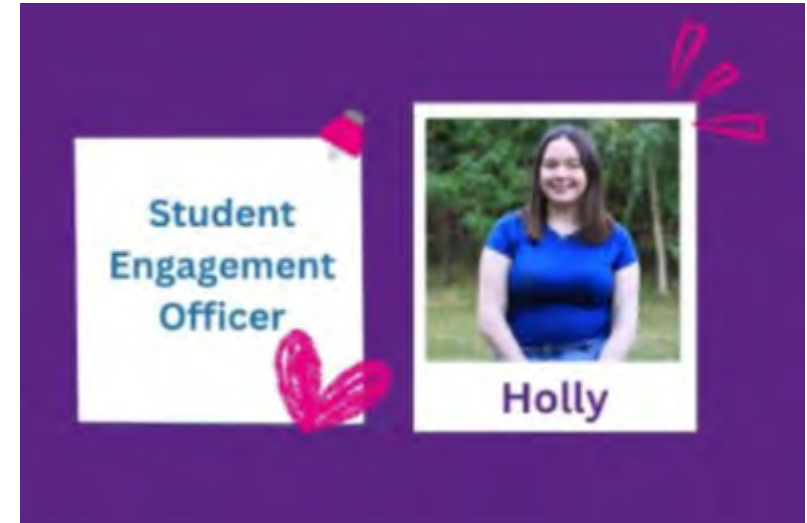
**Not in or running late**

---

Contact **Holly**

[HAbleGreen@nescot.ac.uk](mailto:HAbleGreen@nescot.ac.uk)

0208 394 1731 x 3069



## Other contacts

---

- Main group tutor/ Primary tutor – academic progress/ pastoral support (*see welcome email and handbook*)
- English and maths teacher - – academic progress (*see welcome email and handbook*)
- Learning support – Lucy [LFowkes@nescot.ac.uk](mailto:LFowkes@nescot.ac.uk)
- Enrolment conformation - [adviceteam@nescot.ac.uk](mailto:adviceteam@nescot.ac.uk)
- Financial support - [studentfinance@nescot.ac.uk](mailto:studentfinance@nescot.ac.uk)



## Key dates

- **Open days**
  - **Saturday 11 October** 10am to 1pm
  - **Wednesday 19 November** 4.30pm to 7.30pm
  - **Tuesday 3 March** 4.30pm to 7.30pm
  - **Wednesday 13th May** 4.30pm to 7.30pm
- **SEND progression Fair** 27th November 2025
- **Summer Fair** TBC
- **Sports Day** 15th June 2026
- **Talent show** 22nd June 2026
- **End of year Ceremony** (last day of term) 24th June 2026

# Other key information

---

- **Key documents to familiarise yourself with (email to follow)**
  - Student code of conduct
  - Nescot Code of Conduct for Parents/ Guardians/Carers/Visitors
- **Forms**
  - Cooking cost
  - Photo and video consent & trips consent
  - Farm – Tetanus

---

# ANY QUESTIONS

Thank you all for coming today.

We are looking forward to working with you and your young person this year.

**nescot**

