



Course & career support

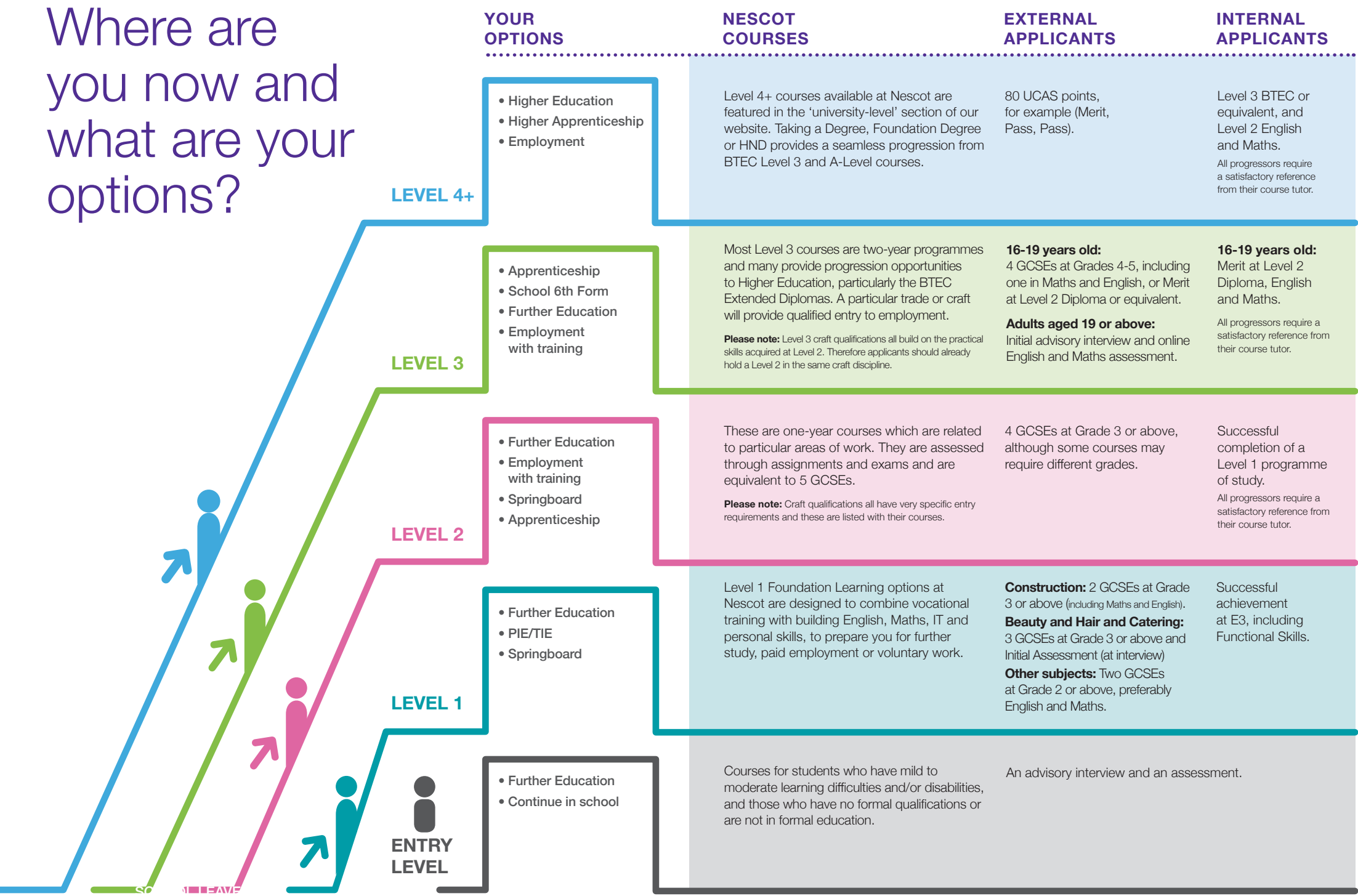
Nescot's Advice & Guidance specialist staff are here to help you join the right course and achieve your goal.

If you have any questions or difficulties during your time as a student, our dedicated team are here to help.

Let's plan your journey together.

 **Nescot**

Where are you now and what are your options?



Your learning journey starts here



If you do not know where to go for the help you need, ask at **Advice & Guidance** and we'll point you in the right direction.

Nescot Courses 2019

Foundation Learning	For students with mild/moderate learning difficulties or without Level 1 entry qualifications
Pre-College	School links programme, introduction to Nescot.
Year 1	<p>Foundations - The first year in college. Settle into the new environment and experience a range of tasters in vocational subjects.</p> <p>Life Skills - Support to develop independent living skills before progressing into adult social care, supported living and/or employment.</p> <p>Achieve@College - For applicants who want to enter Level 1 courses but don't have the entry requirements. During the year students spend time infilling on the course they aim to progress to.</p> <p>Supported Internship - Four days a week work experience placement with support from a SEN job coach. The placement is carefully picked to ensure opportunities to progress into paid employment.</p>
Year 2	Building Blocks - Select two vocational roles. Spend the year developing the skills and knowledge needed for these roles.
Year 3	Springboard - A final year in college experiencing work and/or voluntary opportunities. Take part in individual or group placements.
Post-College	Individual Support from the Transitions Officer.

Foundation Learning graduates have gone on to higher level study or found jobs in offices, cafes, facilities, hotels, farms and building sites.

Each student will apply online for Foundations.

The next step will be to attend an interview which will involve a brief assessment. We can then discuss individual needs and together agree an appropriate starting point.

Courses listed in red indicate that the lower level must be completed first

Level one	Entry requirements
Animal Studies (Landbased)	GCSE English and maths at grade 2, or Functional Skills English and maths at Entry Level 3.
Art and Design	Four GCSEs at grade 2 or above, a satisfactory school reference and a portfolio of art work for evaluation at interview.
Brickwork	Two GCSEs at grade 3 or above in English and maths, and a satisfactory school reference.
Carpentry and Joinery	Two GCSEs at grade 3 or above in English and maths, and a satisfactory school reference.
Childcare	A minimum of grade 2 in GCSE maths or English, and a satisfactory school reference.
Computing	Entry Level 3 in Numeracy and Literacy (or equivalent), plus an assessment test at interview.
Construction (Multi-Skills)	Two GCSEs at grade 3 or above in English and maths, and a satisfactory school reference.
Electrical	Two GCSEs at grade 3 or above in English and maths, and a satisfactory school reference.

Courses listed in red indicate that the lower level must be completed first

Hair	Three GCSEs at grade 3 or above, or a minimum of Entry Level 3 in English at initial assessment.
Hospitality and Catering (Professional Cookery)	Four GCSEs at grade 3 or above, including English, plus enthusiasm and passion to work in the Hospitality and Catering industry.
Media Music Tech	Four GCSEs at grade 2 or above, and a satisfactory school reference.
Motor Vehicle	Two GCSEs at grade 3 or above in English and maths, and a satisfactory school reference.
Plastering	Two GCSEs at grade 3 or above in English and maths, and a satisfactory school reference.
Plumbing	Two GCSEs at grade 3 or above in English and maths, and a satisfactory school reference.
Sport	Two GCSEs at grade 2 or above, preferably English and maths, or Functional Skills English and maths at Entry Level 3.
Uniformed Public Services (Teamwork, Personal Skills and Citizenship)	An interest in fitness, public services and the outdoors, and a satisfactory school reference.
Level two	Entry requirements
Animal Care	GCSE grade 3/4 profile in maths and English as well as GCSE science at grade 3, or a Level 1 in Landbased Studies, with a satisfactory reference of attendance, behaviour and ability to meet deadlines.
Art and Design	Four GCSEs at grade 3 or above including English and a portfolio of art work for evaluation at interview, or Level 1 Diploma plus a minimum of Level 1 Functional Skills English.
Beauty	Three GCSEs at grade 4 or above including English, and at least one grade 3 or above. Or, Level 1 in Beauty with most grades at Merit or above, as well as English.
Brickwork	Level 1 Brickwork plus Maths and English, and a satisfactory reference from the tutor.
Business	Four GCSEs at grade 3 or above to include maths and English, or a Level 1 Diploma plus English and maths.
Carpentry and Joinery	Level 1 Carpentry plus Maths and English, and a satisfactory reference from the tutor.
Childcare	Four GCSEs at grade 3 or above, including English and preferably maths, or Merit grade at Level 1 plus English or maths. We will also require a satisfactory school reference. Please note, applicants will be asked to apply for an Enhanced DBS check before starting the course.
Computing	Four GCSEs at grade 3 or above including English and maths or Level 1 Diploma plus English and maths.
Computing (Digital Applications)	Two GCSEs at grade 3 or above, or equivalent. GCSE English at Level 1 or above. Maths at Entry Level 3 or equivalent.
Construction (Building Maintenance Multi-Trade Repair)	Two GCSEs in English and maths at grade 3 or above or Level 1 in a construction discipline and a satisfactory school reference.

Courses listed in red indicate that the lower level must be completed first

Electrical	Two GCSEs in maths and English at Grade 4 or above. Science GCSE would also be an advantage due to the electrical principles involved in this course, plus a satisfactory school reference. Alternatively successful completion of Level 1 programme, appropriate English and Maths, a good reference with 90% attendance and no cause for concern on Promonitor.
Hair	Four GCSEs at grade 3 or above including English and a successful trade test. Or, successful completion of Level 1 Hair with the majority of grades at Merit or above plus English, plus a satisfactory reference from the tutor.
Hair and Media Makeup	Three GCSEs at grade 4 or above including English, and at least one grade 3 or above.
Health and Social Care	Four GCSEs at grade 3 or above including English and preferably maths, or Level 1 Diploma at Merit plus English and maths. We will also require a satisfactory reference from your school. Please note, all applicants will be asked to apply for an Enhanced DBS check before starting the course.
Horticulture	2 GCSEs grade C/D new grade 3/4 in English and Maths as well as GCSE Science grade D/ new grade 3 and a satisfactory reference.
Hospitality and Catering (Professional Cookery)	Successful completion of Level 1 professional cookery, a satisfactory tutor reference, plus enthusiasm and passion for working in the Hospitality and Catering industry.
Media (Creative Media Production)	Three GCSEs at grade 4 or above including English, plus one grade 3, or Level 1 Diploma plus English.
Motor Vehicle	Level 1 Diploma in Motor Vehicle Maintenance and Repair plus GCSE maths and English at Grade 4 or above. Science GCSE would also be an advantage due to the electrical principles involved in this course, plus a satisfactory reference from the tutor.
Performing Arts	Four GCSEs at grade 3 or above including English, or Level 1 Diploma plus English, and a successful audition.
Plastering	Level 1 Plastering plus maths and English, and a satisfactory reference from the tutor.
Plumbing	Two GCSEs at Grade 4 or above in GCSE English and maths, and a satisfactory school reference.
Sport	Four GCSEs at grade 3 or above including English, or Level 1 Diploma plus Functional Skills English Level 1.
Travel and Tourism	Four GCSEs at grade 3 or above including English, or Level 1 Diploma plus English and maths.
Uniformed Public Services (Teamwork and Personal Development in Community)	Four GCSEs at grade 3 or above including English, or Level 1 Diploma plus English.
Level three	Entry requirements
Animal Care	Four GCSEs at grade 4 or above including science, English and maths. Alternatively, Level 2 in Animal Care with English and maths at grade 4 or above, and a Distinction grade for a Level 2 Science unit.
Animal Studies (Veterinary Nursing)	Five GCSEs at grade 4 or above in English Language, Science and maths plus two others, or Level 2 in Animal Care or equivalent. Placement at an approved training and assessment practice with written agreement from the employer.
Art and Design	Four GCSEs at grades 4 or above including English and an art and design subject, and a portfolio of art work for evaluation at interview. Or Merit grade at Level 2 in an art and design subject plus English.
Beauty	Level 2 in Beauty (either the Level 2 Technical or Merits at VRQ or equivalent) plus English, and a satisfactory reference from the tutor.
Business	Four GCSEs at grade 4 and above to include maths and English, or a Level 2 Diploma at Merit plus English and maths.

Courses listed in red indicate that the lower level must be completed first

Childcare	Four GCSEs at grade 4 or above, including English and preferably maths, or Level 2 Diploma at Merit with GCSE English or maths at grade 4 or above. We will also require a satisfactory reference from your school. Please note, applicants will be asked to apply for an Enhanced DBS check before starting the course.
Computing (Information Technology Diploma and Extended Diploma)	Five GCSEs grades 4 or above including maths and English, or Level 2 Diploma at Merit plus English and maths.
Construction (and the Built Environment)	GCSE maths at grade 5 or above and two other GCSEs at grade 4 or above, including English language. Alternatively, a Level 2 BTEC in Construction at Merit or above overall, with Merit in the maths and science units, plus GCSE.
Electrical	Level 2 in Electrical Installation and two GCSEs in maths and English at grade 4 or above, Science GCSE would also be an advantage, and a satisfactory reference from the tutor.
Electrical and Electronic Engineering	GCSE maths and science at grade 5 or above, and two other GCSEs at grade 4 or above, including English Language. Alternatively, a Level 2 in Engineering at Merit overall, with Merit in the maths and science units, and grade 4 or above in English Language and maths. Plus a satisfactory reference.
Hair	Level 2 Diploma in Hairdressing with the majority of grades at Merit or above, plus English and maths and a satisfactory reference from the tutor.
Hair and Media Make-up	Level 2 in Hair and Media Makeup (either the Level 2 Technical or Merits at VRQ or equivalent), plus a grade 4 in English.
Health and Social Care	Four GCSEs at grade 4 or above including English and preferably maths and science, or Level 2 Diploma at Merit plus English or maths. We will also require a satisfactory school reference. Please note, all applicants will be asked to apply for an Enhanced DBS check before starting the course.
Music Technology	Four GCSEs at grade 4 or above including English, or Level 2 at Merit or above plus English.
Media (NextGen Games Design)	Four GCSEs at grade 4 or above including maths and preferably English, or Level 2 at Merit plus maths and English.
Media (Digital Design)	Four GCSEs at grade 4 or above including English, or Level 2 at Merit plus English.
Media Production (Creative)	Four GCSEs at grade 4 or above including English, or Level 2 at Merit plus English.
Osteopathy (Foundation)	No formal qualifications are required for entry but a commitment to learning is essential.
Performing Arts	Four GCSEs at grade 4 or above including English, or Level 2 Diploma at Merit plus English and maths, and a successful audition.
Plumbing	Level 2 Plumbing plus GCSE maths and English, and a satisfactory reference.
Uniformed Public Services	Four GCSEs at grade 4 or above including English, or Level 2 at Merit plus English and maths.
Sport (120 Credit Diploma)	Four GCSEs at grades 4 or above including English and maths or Level 2 Sport.
Sport (Extended Diploma)	Five GCSEs at grade 4 or above including English, and either PE or science, or Level 2 in Sport at Distinction grade.
Sport Science (Extended Diploma)	Five GCSEs at grade 4 or above including English, and either PE or science, or Level 2 in Sport at Distinction grade.
Travel and Tourism	Four GCSEs at grade 4 or above including English, or a Level 2 Diploma in Travel at Merit plus English and maths.

In addition to the above, all internal applicants will need a satisfactory reference before they can progress.

Access to Higher Education	
Access to HE (Health & Social Care Professions (Nursing Pathway) - Level 3)	Applicants must be aged 19+ and must have GCSE maths and English at grade 4 (formerly grade C) or above.
Level four	Entry requirements
Computing: (Higher National Certificate HNC)	Level 3 in Computing or other related Level 3 course.
Performing Arts (Technical and Production Practice for Creative Industries: Professional Diploma)	Level 3 in Performing Arts, Media, Music Technology or other related Level 3 course.
Level five	Entry requirements
Animal Management (Foundation Degree)	From A levels: 80 UCAS Tariff points, typically including a Grade C in A2 Biology BTEC: 80 UCAS Tariff points in an Landbased subject Access Diploma: Pass with 60 credits Plus: Five GCSE's at Grade 4 or above inclusive of English, Maths & Science Mature students lacking the above qualifications, but with significant and appropriate industry experience may apply, and eligibility will be assessed by interview and portfolio of evidence.
Computing (Computing and Systems Development HND)	From A levels: 64 UCAS Tariff points BTEC: 64 UCAS Tariff points Plus: GCSE (A*-C): minimum of five subject including Mathematics and English Language. We will consider a range of alternative qualifications, or experience, such as level 3 Cisco, Microsoft or Oracle.
Counselling (Psychodynamic Counselling HE Diploma)	Level 3 AIM Certificate in Counselling.
Creative Media Production (Games/Animation and VFX HND)	A Portfolio of Design Work and one of the following: 160 UCAS points, A minimum of MPP on a relevant National Diploma or two A-levels grade C. Mature students without suitable academic entry requirements will be considered in light of relevant occupational experience
Creative Media Production (Moving Image HND)	From A levels: 64 UCAS Tariff points BTEC: 64 UCAS Tariff points Plus: GCSE (9 - 4): minimum of five subject including Mathematics and English Language. We will consider a range of alternative qualifications or experience that is equivalent to the typical offer.
Early Years (Foundation Degree)	Level 3 Early Years qualification (or equivalent). You will need to be in employment in an appropriate setting (either paid or voluntary) for at least 16 hours per week for the duration of the course and have two years' experience in an appropriate setting.
Environmental Health (Food Premises Inspection: HE Certificate)	Applicants must have HND/BSc Honours QAA FHEQ Level 4 in a related discipline. Applicants for this course should be employed and supported by a Local Authority Environmental Health Department. In exceptional circumstances, applicants not in such employment but with significant experience in catering or food manufacture, holding a relevant QAA FHEQ Level 4/5 qualification may also be considered.
Healthcare Play Specialism (Foundation Degree)	<ul style="list-style-type: none"> GCSE Maths and English at grade 4 or above, or equivalent Level 2 in Literacy and Numeracy Minimum of a relevant Level 3 qualification in Childcare or a related field Minimum of two years' post qualification employment, working with children Good communication skills Evidence of continuous professional development Evidence of current, regular and relevant employment in the sector Identification of a registered Play Specialist to act as work-based mentor Commitment to complete a 200-hour placement each year

Performing Arts (HND)	From A levels: 64 UCAS Tariff points BTEC: 64 UCAS Tariff points Plus: Five GCSE subjects grades A*-C including Mathematics and English Language. We will consider a range of equivalent qualifications or experience.
Sports Coaching (Foundation Degree)	From A levels: At least one Sport OR Science A2 at C or above in either PE, Sport Studies, Biology, Chemistry, Applied Science or Psychology, Sport Psychology. BTEC: 80 points (grades MMP) - Level 3 BTEC Extended Diploma in Sport and Exercise Science or Applied Science or Applied Biology or Sport. Plus: Five GCSE subjects grades A*-C including Mathematics and English Language.
Sports Therapy (Foundation Degree)	From A levels: 80 UCAS Tariff points usually in P.E. / Biology based subjects BTEC: 80 UCAS Tariff points in Sport/ Science based subjects Access Diploma: Pass with 60 credits Plus: 5 GCSE's at Grade C / new grade 4 or above inclusive of English, Maths and Science. Mature students lacking the above qualifications, but with significant and appropriate industry experience may apply, and qualifications will be assessed by interview and portfolio of evidence.
Teaching (Certificate in Education)	Students are required to hold at least grade 4 or equivalent in English and Maths at GCSE and a HNC, HND, or Level 3 in their subject specialism.
Teaching (Supporting Teaching and Learning: Foundation Degree)	Interview and assessments. Applicants are normally required to hold a level 2 qualification in Communication or a GCSE in English Language. An appropriate level 3 qualification in Learning Support is normally required. Where appropriate, candidates with substantial relevant experience as a teaching assistant in a relevant setting may be considered.
Level six	Entry requirements
Computing (BSc (Hons) Top-up)	Foundation degree in Computing (or international equivalent recognised by NARIC) BTEC Level 5 HND in Computing and Systems Development at Merit grade. British Computer Society (BCS) Diploma in IT (level 5) - including professional project. HNC in computing subject plus at least 3 years relevant work experience. We will consider a range of equivalent qualifications or experience.
Osteopathic Medicine: (BOst (Hons))	From A levels: 96 UCAS Tariff points, including science based subjects BTEC: 96 UCAS Tariff points Access Diploma: Pass with 60 credits (Science based) Plus: Five GCSE subjects grades A*-C including Mathematics and English Language. We will consider a range of equivalent qualifications or experience.
Performing Arts (Collaborative Theatre: BA (Top-up)	FdA in a theatre subject HND in Theatre, Drama, Performing Arts, Stage Management or Theatre Design, with merit/distinction profile.
Sports Therapy (BSc (Hons) Top-up)	Foundation degree in Sports Therapy (or international equivalent recognised by NARIC) We will consider a range of equivalent qualifications or experience. Disclosure and Barring Service (DBS) clearance is required before the start of the course to indicate that you are permitted to work with members of the public.
Teaching (Education Studies BA (Hons) Top-up)	Interview and assessments. Applicants are normally required to hold a level 2 qualification in Communication or a GCSE in English Language. Candidates who already hold 240 credits from a foundation degree in education or related subject area, Cert Ed holders and DTLLS holders will be required to do 120 additional credits in order to access the BA top-up.
Teaching (PGCE)	Students are required to hold a degree in their subject specialism and an English GCSE at grade 4 or above, or equivalent.
Level seven	Entry requirements
Osteopathy (Osteopathic Medicine: Integrated Masters: MOst)	From A levels: 112 UCAS Tariff points, including science based subjects BTEC: 112 UCAS Tariff points, in science based subjects Access Diploma: Pass with 60 credits (Science based) Plus: Five GCSE subjects grades A*-C including Mathematics and English Language. We will consider a range of equivalent qualifications or experience. Disclosure and Barring Service (DBS) clearance is required.

Nescot currently offers apprenticeships in:	Level 2	Level 3	Level 4	Level 5
Business Administration		✓		
Carpentry & Joinery	✓	✓		
Chef De Partie		✓		
Childcare (Early Years)	✓	✓		
Combat Systems Engineering			✓	
Commis Chef	✓			
Customer Service	✓			
Digital Marketer		✓		
Electrical		✓		
Hairdressing	✓	✓		
Hospitality Supervisor		✓		
Hospitality Team Member	✓			
Infrastructure Technician		✓		
IT Computing/Telecommunications			✓	
Junior Digital Content Producer		✓		
Motor Vehicle		✓		
Operations/Departmental Manager				✓
Plastering	✓			
Plumbing	✓	✓		
Team Leader/Supervisor		✓		
VFX Assistant Technical Director			✓	

www.nescot.ac.uk



NescotCollege



@Nescot

Advice & Guidance: **020 8394 3038**
Reigate Road, Ewell, Epsom, Surrey, KT17 3DS

